



Windsor Solutions, Inc.

# Exchange Network

Leveraging Tribal Programs:  
Coast to Coast Cooperative Solutions

Wednesday, May 4, 2011

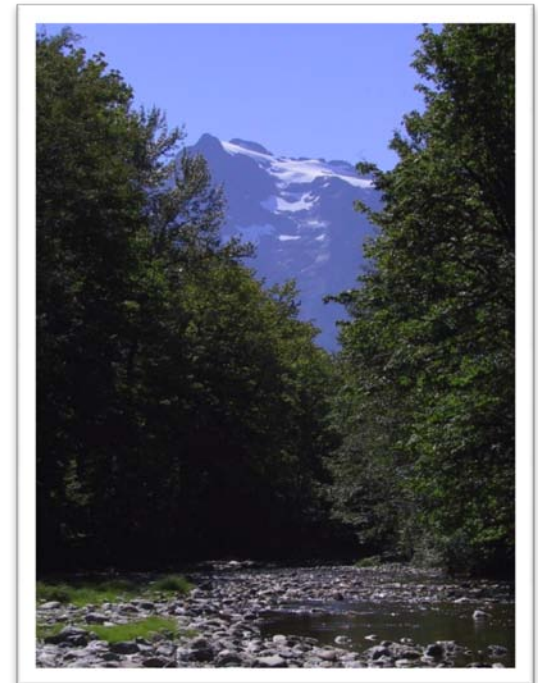
NCAI Exchange Network Conference 2011



Environmental + Health  
Information Systems

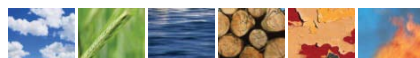
# Session Purpose

*To provide a contractor's perspective of implementing cooperative solutions.*



# Topics

- Windsor Overview and Discussion of Role in Process
- WQX Exchange Timeline
- Compare and Contrast Participants
- How Sharing Really Works
- Common Challenges
- Benefits of Sharing Solution
- Questions



# Introduction to Windsor

- Founded in 1998, headquartered in ~~Lake Oswego~~ Portland, OR
- Primarily focused on Environmental Information Systems
- National reputation working with environmental agencies
- Specialists at integrating environmental information
- Financially stable, no external funding
- Track record of delivery on time and within budget
- Exchange Network Specialists

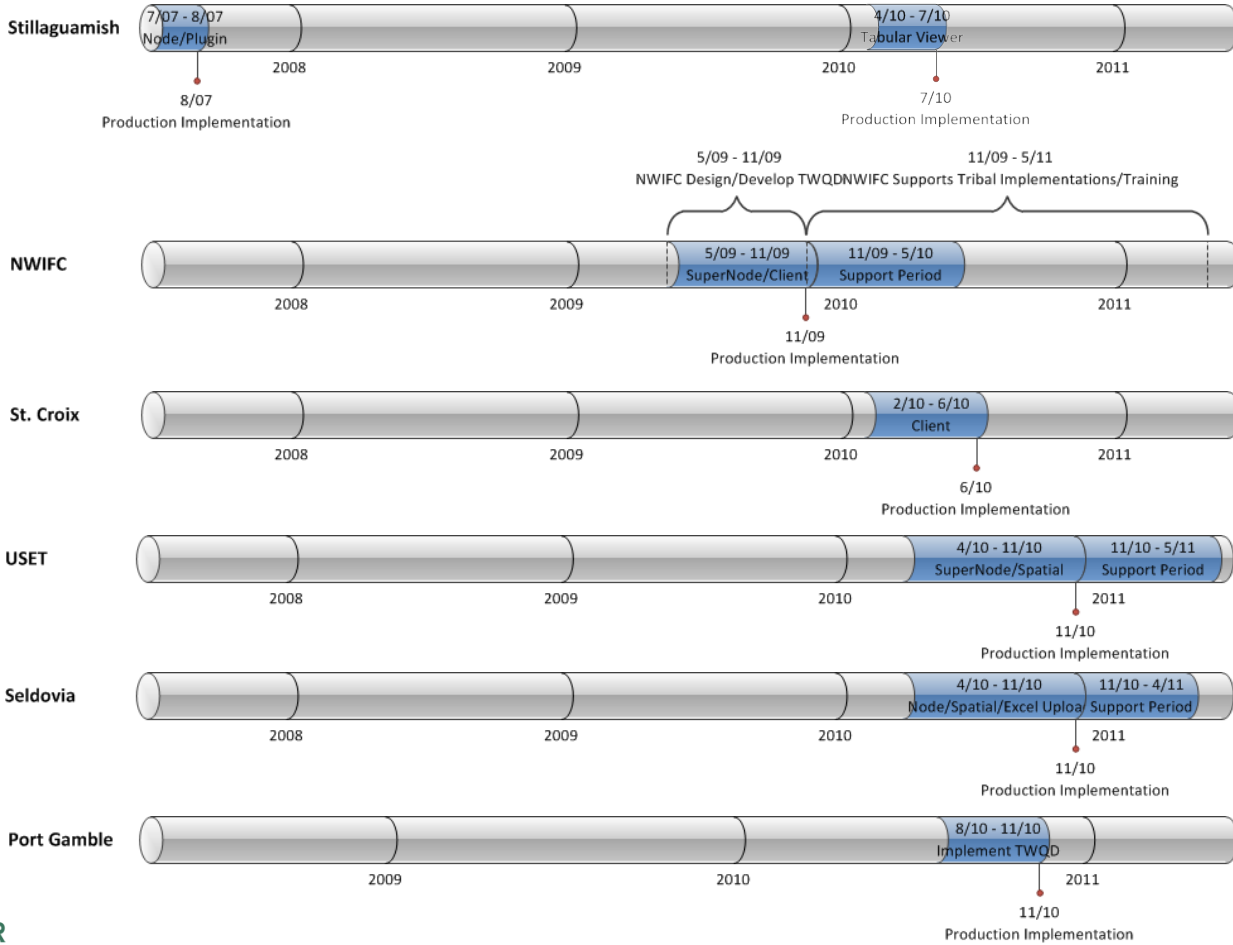


# Windsor's Role in Process

- Promotion of Build Once, Use Many!
- Provide a Framework for Success
- Assist in Discovery of Needs/Requirements Definition
- Facilitation/Mediation of Shared Requirements
- Assist in Exploration of Known Implementation Options
- Design and Develop New System Components, if Needed
- Assist in Solution Implementation
- Provide Data Migration Support
- Provide Exchange Network Support
- Provide Training on Solution

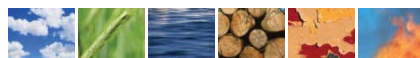


# Timeline



# Compare and Contrast Participants

	Data Management			Data Exchange		Data Sharing	
	TWQD	Excel (with Upload)	MS Access	Client	Node	Provide Data (to EPA, etc.)	Receive Data
NWIFC	√	√		√	√	√	√
Penobscot Indian Nation			√		√	√	√
Port Gamble S'Klallam Tribe	√				√	√	√
Seldovia Village Tribe		√			√	√	√
Stillaguamish Tribe of Indians			√		√	√	√
St. Croix Chippewa Indians	√			√		√	
USET	√	√		√	√	√	√



# Compare and Contrast Participants

**NWIFC WQX Exchange Network Client**

**Home**

This NWIFC WQX Exchange Network Client is an application which provides partners of the Northwest Indian Fisheries Commission (NWIFC) with the ability to exchange ambient water quality information amongst tribes, the NWIFC and the EPA by means of the Exchange Network's Water Quality Exchange (WQX).

**Provide Data to EPA/NWIFC/Partner**

Submit WQX data to the EPA, NWIFC or an Exchange Network Partner.

**Import Data from NWIFC**

Download WQX data from NWIFC to store in your local database.

**Activity History**

View the history of activities performed by this application.

**Configuration**

Specify configuration options for this application.

Developed by Windsor Solutions, Inc. for the Northwest Indian Fisheries Commission and its member tribes

**St. Croix WQX Exchange Network Client**

**Home**

This St. Croix WQX Exchange Network Client is an application which provides partners of the St. Croix Chippewa Indians of Wisconsin (St. Croix) with the ability to exchange ambient water quality information amongst tribes, the St. Croix and the EPA by means of the Exchange Network's Water Quality Exchange (WQX).

**Provide Data to EPA/Partner**

Submit WQX data to the EPA or an Exchange Network Partner.

**Activity History**

View the history of activities performed by this application.

**Configuration**

Specify configuration options for this application.

Developed by Windsor Solutions, Inc. for the St. Croix Chippewa Indians of Wisconsin

**USET WQX Exchange Network Client**

**Home**

This USET WQX Exchange Network Client is an application which provides partners of the United South and Eastern Tribes, Inc. (USET) with the ability to exchange ambient water quality information amongst tribes, the USET and the EPA by means of the Exchange Network's Water Quality Exchange (WQX).

**Review Data**

Review WQX data to submit.

**Provide Data to EPA/USET/Partner**

Submit WQX data to the EPA, USET or an Exchange Network Partner.

**Import Data from USET**

Download WQX data from USET to store in your local database.

**Activity History**

View the history of activities performed by this application.

**Configuration**

Specify configuration options for this application.

Developed by Windsor Solutions, Inc. for the United South and Eastern Tribes, Inc. and its member tribes

v.1.1.85.170





# Compare and Contrast Participants

WQX Spatial Viewer - Seldovia Village Tribe

Search Criteria | Data View

**Locations**

**Search Criteria**

Organizations: Please select an organization

Projects: Please select a project

Locations: Please select a location

Activities started between: Start Date and End Date

Results Criteria (Match Any)

No Results Criteria Specified - Add

Clear Search

WQX Spatial Viewer by Windsor Solutions, Inc. for Seldovia Village Tribe - ©2009-2010, Version: 1.0.0.258, 1.0.1.410 Contact Administrator

WQX Spatial Viewer - United South & Eastern Tribes, Inc.

Search Criteria | Data View

**Locations**

**Search Criteria**

Organizations: Please select an organization

Projects: Please select a project

Locations: Please select a location

**WQX Spatial Viewer - United South & Eastern Tribes, Inc.**

Login

Please enter your NAAS credentials to access the WQX Spatial Viewer application:

NAAS Username:

NAAS Password:

Login

WQX Spatial Viewer by Windsor Solutions, Inc. for United South & Eastern Tribes, Inc. - ©2009-2010, Version: 1.0.0.250, 1.0.0.388 Contact Administrator



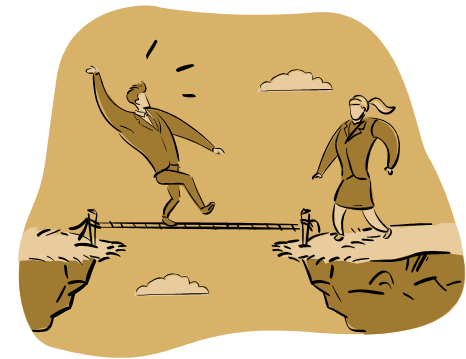
# How Sharing Really Works

- Establish Sharing Agreement with Original Partner
- Explore Needs and Requirements
- Explore Known Options
- Reconcile Differing/Competing Needs
- Design New/Changed Components
- Checkpoint
- Adjust Existing System As Required
- Develop New System Components
- Implement System and Provide Training
- Provide Updated Components Back to Original Partners



# Challenges

- Establishing Sharing Agreement, if Needed
- Facilitation Amongst Partners and Reconciliation of Needs
- Establishing Trading Partner Agreements
- Developing Client/Contractor Partnership
- Management of Multiple Versions of System Components and Multiple Developing Organizations



# Benefits of Sharing

- Incrementally Enhanced and Improved
- Solution Evolves Based on Real Needs
- One Organization Is Not Responsible for Shouldering the Burden/Cost of Designing and Developing the Entire Solution
- Multiple Perspectives Can Lead to a More Robust/Scalable Solution
- Agreed Data Format for Better Compatibility/Interpretation
- Rich Documentation Suite and Training Materials Developed
- Shared Knowledge/Support for Solution → Reduced Reliance on Contractor



# Questions?

