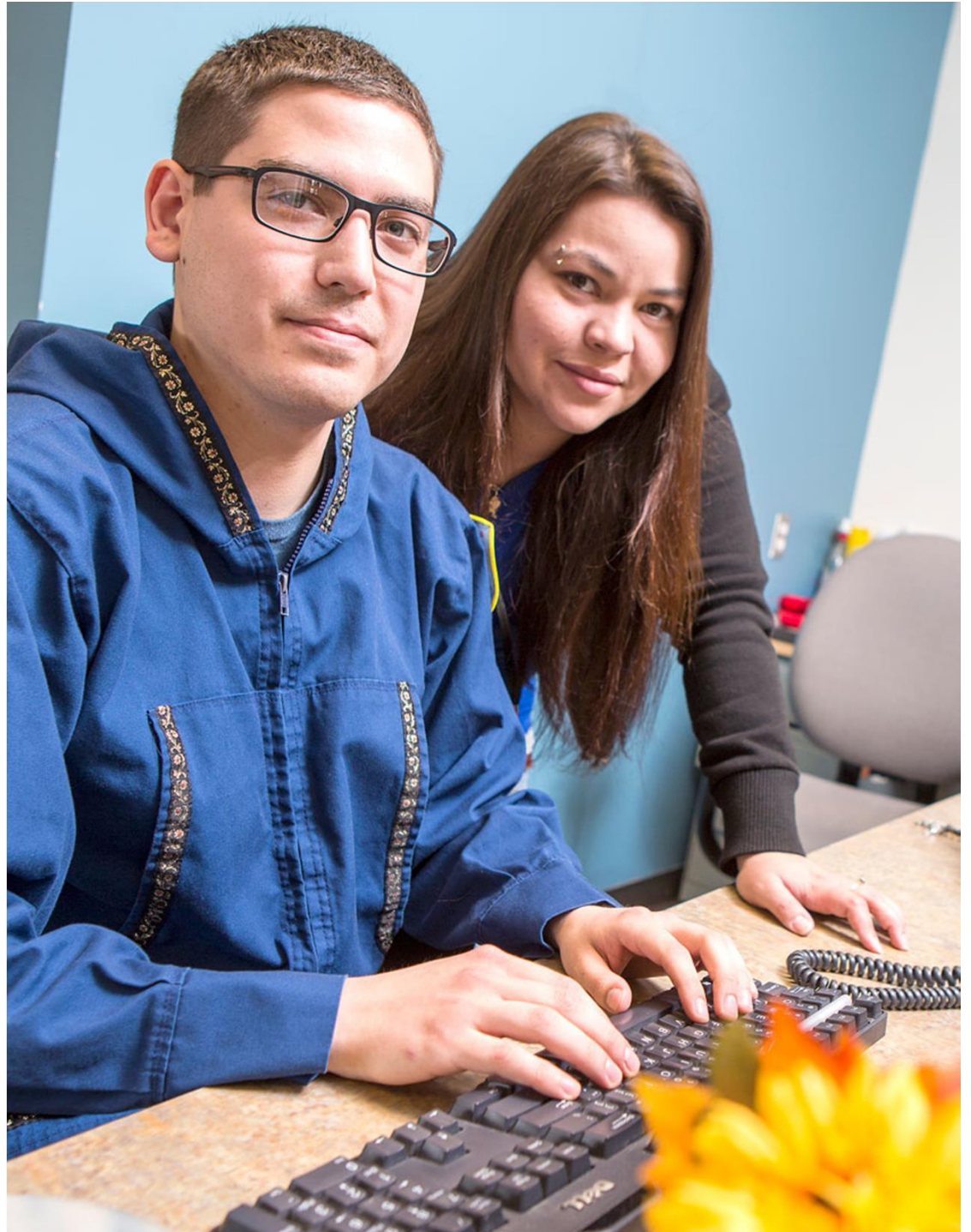
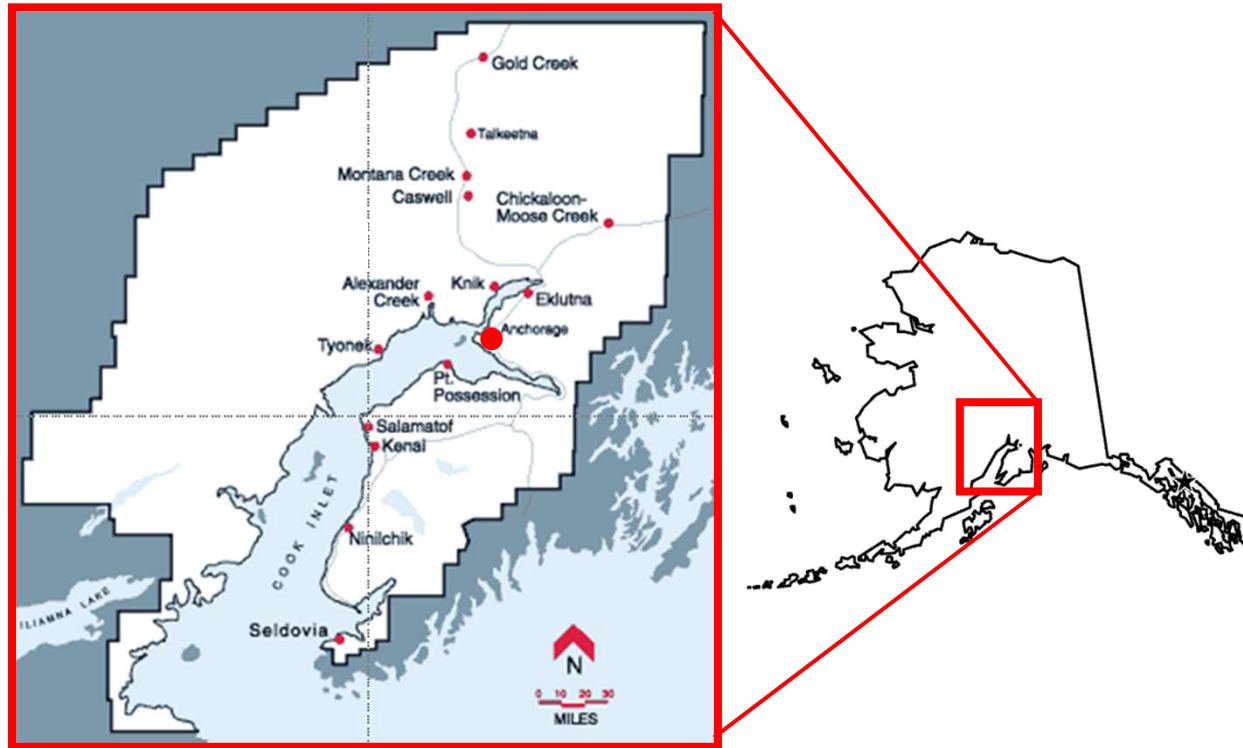


# Alaska's People

*Tribal Innovations  
for Job Placement*

**Gloria O'Neill**  
*President & CEO*





## Alaska Economic Health

- **144,000+** Alaska Native/American Indian people statewide (*nearly 20% of state population*)
- Cook Inlet region: **8 Native villages**
- **Anchorage:** economic hub

# Serving Our People

- **50+** programs
- **\$60 million** budget
- **10,000** participants annually
- **250** employees





# Impact: Education



- **91% graduation rate** among CITC in-school programs (*ASD rate: 57%*)
- increased STEM class capacity by **580 students** last year
- **nearly 2,000 students** served last year

# Impact: Children and Families



- 400+ families **reunified** (*past 5 years*)
- 120+ families **avoided foster care** intervention
- 100+ families enrolled in **family preservation** programs through intensive case management

# Impact: Recovery Services

- **2,500+ individuals** in detox services (*past 5 years*)
- more than **800 people** participated in additional treatment services
- **66% completion rate** for residential detox programs (*national avg. 46%*)
- **88% of participants** indicating reduced or no use 6 months after treatment



# Impact: Self-sufficiency

- **4,000+ participants** employed
- **\$8+ per hour** avg. wage increase
- Nearly **300 trained** in Healthcare
- **1,800+ participants** moved from welfare to work
- **800 families** with **2,500 children** received support through Child Care Assistance





# Skilled Workers in Real-world Jobs

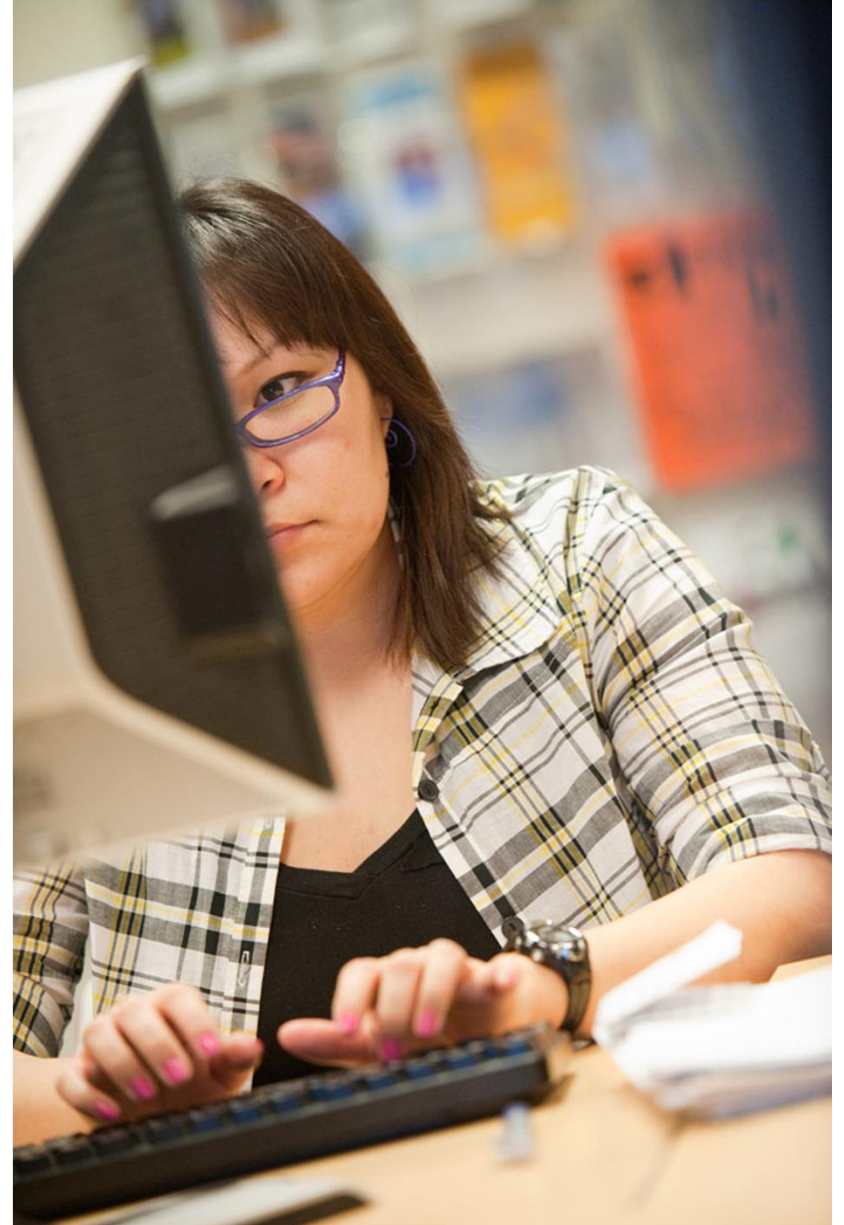
- youth-focused
- “growing our own”

## **Career Development Center**

- employment services
- training opportunities
- job readiness skills
- supported-work services

## **“Wrap-around” Services**

- transportation
- interview skills
- professional attire
- child care
- tools/equipment





# New Approach to Employment

- response to **workforce shortage**
- employees have **lived experience**
- provide **support**
- serve as **mentors, guides**
- connections to **culture, elders, family**
- **1,200+ individuals** touched by peer services through **40+ outreach events**



# Youth Employment Opportunities

- **100+ youth** employed last year
- **50+ interns served** through partnership network
- develop our **curriculum**/and **training** programs
- **apprenticeship** programs
- **280+ students served** in after-school programs
- **STEM-enriched** opportunities reached nearly **700 students** last year



# Removing Employment Barriers

- Re-education/**life skills training**
- **social enterprise**
- **Chanlyut**
  - 81% employed;  
19% recidivism rate  
(66% statewide)
  - micro-businesses generate  
\$746,000 in earned income  
annually







## Focus on High-growth Industry

- enrolled nearly **300 students** for healthcare careers
- **50%** graduates currently employed
- Average starting wage of **\$15 per hour**



## Tikahtnu Commons

- provided employment training for more than **200 participants**
- average wage of **\$11.01 per hour**

# Quyana!

*(Thank You!)*

*Learn more at:*

[\*citci.org\*](http://citci.org)

